



GMT MONTHLY MEMBERSHIP PROGRESS REPORT

Results as of: 5/31/2020

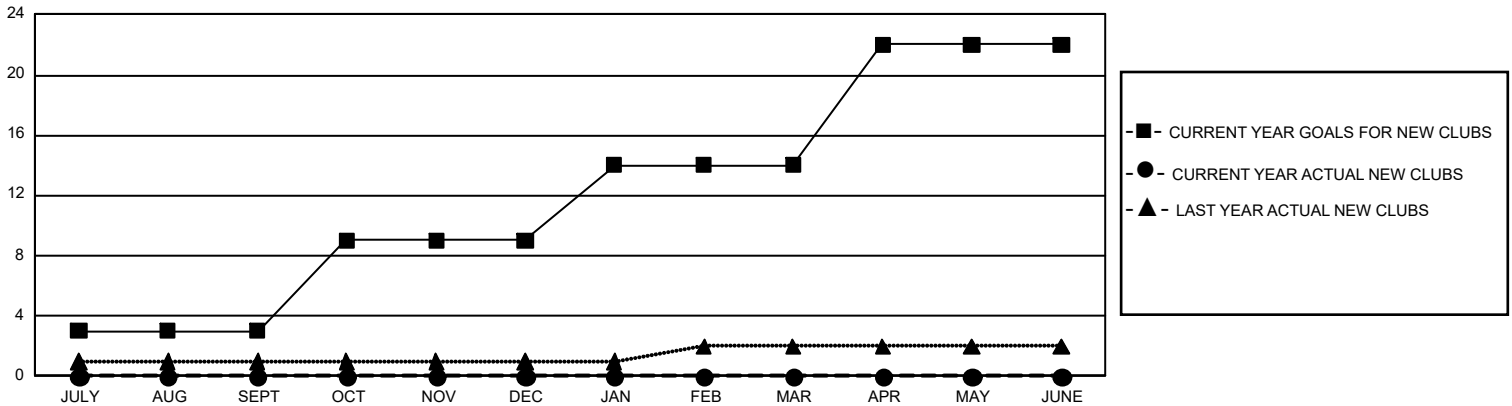
GMT Constitutional Area 1, Group H

GMT: OPEN

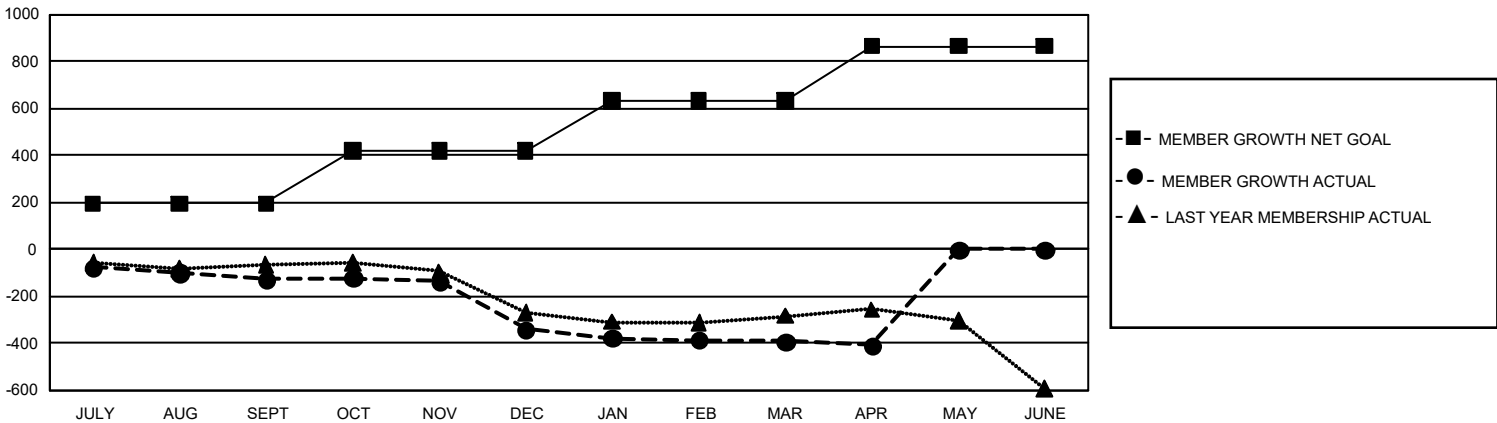
REPORT DOES NOT INCLUDE CLUBS IN UNDISTRICTED AREAS.

Clubs				Members			
RESULTS FOR 2019-2020				RESULTS FOR 2019-2020			
QUARTER	NEW CLUB GOAL	NEW CLUBS	DROPPED CLUBS	QUARTER	MEMBER GROWTH NET GOAL	MEMBER GROWTH ACTUAL	DROPPED MEMBERS ACTUAL (including transfers)
JULY/AUG/SEPT	9	0	3	JULY/AUG/SEPT	588	256	320
OCT/NOV/DEC	18	0	6	OCT/NOV/DEC	669	228	420
JAN/FEB/MAR	15	0	3	JAN/FEB/MAR	648	291	301
APR/MAY/JUNE	24	0	1	APR/MAY/JUNE	693	26	31

GOALS AND ACTUAL NEW CLUBS CUMULATIVE



GOALS AND ACTUAL MEMBERS CUMULATIVE



DROPPED CLUBS: 13	220 CLUBS OF 416 ADDED 1 OR MORE NEW MEMBERS	<u>GENDER DISTRIBUTION</u>	
<u>DROPPED MEMBERS</u>		MALE	6,368 (62.79%)
DECEASED	129	FEMALE	3,773 (37.21%)
CLUB CANCELLED	19	TOTAL FAMILY UNIT MEMBERS	
OTHER	923	2,522	
TOTAL	1,071	FAMILY MEMBERS PAYING HALF DUES	
	CLICK HERE FOR CUMULATIVE MEMBERSHIP DATA	1,294	